

Courtyard Homes

© 2017 Cainn Associates, Inc. all rights reserved.



Courtyard Perspective

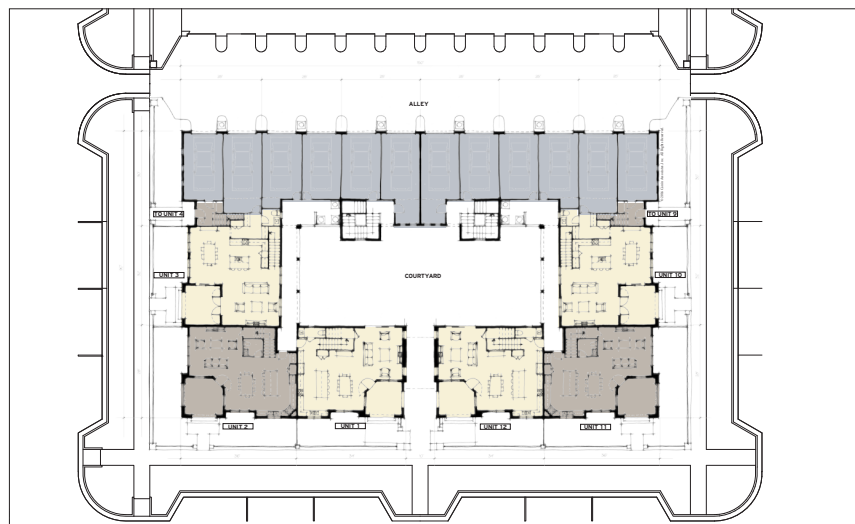
product type
multi-family homes

project size
20,474 sq. ft.

lot size
20,700 sq. ft.

density
18 DU/AC

This new courtyard typology is a for-sale condominium product with two cars per unit. As the illustrative perspectives show, this 12 to 15 unit complex has a great street presence, and also features a very charismatic, secluded courtyard with private patios and generous balconies. The courtyard space is particularly well suited to Florida conditions with its shaded patios and lush landscaping. The parking is primarily off an alley. Unit sizes range from 1,866 to 2,530 sq. ft. of living area. This new typology is appropriate for both infill and greenfield development.



Siteplan

Courtyard Homes

© 2017 Cavin Associates, Inc. all rights reserved.



Front Facade



Courtyard Access