

The CANIN COLLECTION is NEW and READY to GO! Canin Associates Now Offers Complete Architectural Plans for Innovative Home Designs

The Architectural Design Studio
at Canin Associates is recognized as a leader in the housing industry for creating plans designed for today's buyers. As a part of Canin's signature design trends, we focus on: today's lifestyles, strong indoor-outdoor relationships, everyday living spaces, must-have conveniences, flex options, storage (everywhere!), and robust curb appeal in every plan we do.

We now have a variety of architectural construction documents available for new communities that offer designs with alley-loaded or front-loaded garages for both narrow and wide lot types. Visit our new website to tour the home collection and call us for details.



sample elevations from the new Canin Collection

a word from the PRESIDENT



brian c. canin
president

COMMUNITY DEVELOPMENT - Moving into 2014 and Beyond as the Real Estate Business Cycle Continues to Strengthen

Big change is blowing in the wind affecting sociopolitical, demographic and economic patterns and trends. We are seeing a real estate awakening but the direction is decidedly murky relative to long term stability and sustained growth. We have seen a clear trend for the major national builders to evolve a business model of more integrated building and developing albeit in relatively small increments and shorter build-out time frames. The opportunity as well as the downside of this trend has been less emphasis on long-term community building and more focus on housing as a commodity. We do not feel this optimizes value for our home buyers.

In high-growth states, we have seen less interest in taking a long-term view of Master Planned Community development and partnering with builders with a strong emphasis on community building in all of the dimensions that the skilled practitioners have followed successfully in the past. We think that there is still a great opportunity for the revival of excellence around this proven business model. As the current "low hanging fruit" of easy to develop sites diminishes, we look forward to attention focusing on the opportunities and challenges of community building in re-emerging MPCs.

One of the most interesting potential trends we see is a new focus on highly desirable infill locations with small fine-grain residential and mixed use designs that appeal to the combined market of Gen Y's and Baby Boomers where new households without children are estimated at 75% of all new home purchases in many areas. This presents a huge opportunity in the high-value locational benefits of infill and also the need for innovative design solutions, housing typologies and delivery structures. The "big" guys are not in this market so it is a great opportunity for relatively small scale entrepreneurs to succeed that is reminiscent of earlier times. This more micro scale of community building and

continued on next page

RESORT RENOVATION, in Florida

In 2012 the Canin Landscape Architecture Studio was engaged to help re-envision the resort landscape at The Shades of Green Resort, which is the only Armed Forces Recreation Center (AFRC) located in the Continental United States. The resort was remodeled and reopened in 2004. The Shades of Green lease with Palm Hospitality began in 1994.

The resort hosts about 175 weddings a year, in many locations around the 23-acre property. While assessing the extent of the needed repairs and updates to mechanical and filtering issues with the pond, our team proposed that the whole courtyard area could be enhanced with a fresh and cohesive theme. In addition to creating outdoor rooms for dining, relaxing and weddings, a “Resiliency Garden” is planned as well. This will be a place for contemplation and rejuvenation in a beautiful Florida waterside setting.

Our team of landscape architects is leading a complex team of consultants with detailed coordination with resort staff to develop the construction documents in preparation for a Fall 2014 ground breaking.



- LEGEND:
- (A) Dining Terrace
 - (B) Koi Ponds
 - (C) Island Retreat
 - (D) Wedding Pavillion
 - (E) Mountain Lake
 - (F) Resiliency Garden

continued from first page

design resonates powerfully with potential buyers who perceive the added value of small distinctive neighborhoods.

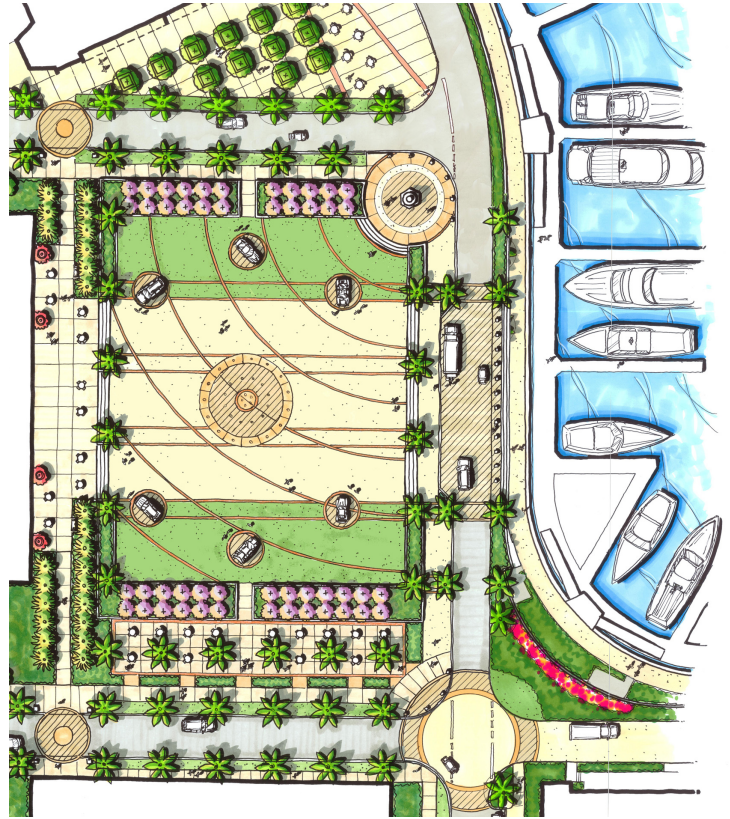
At Canin Associates, we have organized our business plan for the next 5 years to serve both the emerging new demand for high quality MPCs and also the exciting infill and redevelopment opportunities in our older neighborhoods. We are also able to readily adapt our design solutions into each business context.

After having weathered the greatest real estate debacle over the last 5 years, Canin Associates is again positioning our firm to expand and grow. To facilitate this reorganization, we are adopting the mentality of a “start-up” in each of our 3 studios that is able to leverage new growth off a 33-year base of institutional knowledge and a successful track record of community building and placemaking.

As always, all of us at Canin Associates wish you a happy holiday season and a joyous New Year! *Brilliant*

PROGRESS CONTINUES at Albany, New Providence, Bahamas

This year, Canin Associates is pleased to have had the opportunity to continue our relationship with the Tavistock Group by providing design services for the Albany luxury resort community. As a continuation of the development of Albany's mega-yacht marina, construction has commenced on the first three luxury-residence condominium buildings. Canin Associates landscape architects worked closely with the project team to provide site designs for the three condominium buildings and common areas. Designs are also underway for Albany Plaza, the central gathering space located in the heart of the community and directly fronting on the marina. The plaza is surrounded by three landmark commercial and residential mixed-use buildings, and will provide a large space for hosting premier open-air events. Some design highlights include a large, flush water jet fountain feature, exhibition platforms for high-end vendors, formal tree bosques, and café seating terraces. The Albany Plaza provides a space for community residents and guests to gather and socialize, and it accentuates views to both the marina and the landmark building architecture which exemplifies the premium character of Albany.

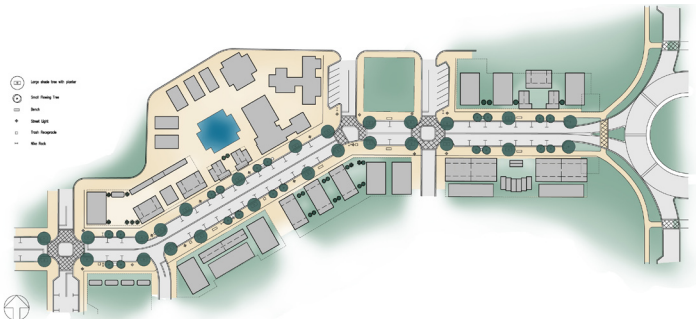


rendering of proposed plaza at Albany

Update

CANIN AWARD: Tactical Urbanism

This year's Canin Award student, Jason Hill, researched the application of Tactical Urbanism in initiating and establishing a new Main Street. Tactical Urbanism is an umbrella term for strategies used to create or improve urban places through lower cost, lightweight interventions that provide short-term benefits, establish a track record of success, and lay the groundwork for more permanent investment. This project tested the potential for "Site Previtization" to provide amenities in the early stages of a new community development and lays the groundwork for a robust and authentic main street to evolve over time. Three phases establish a temporary streetscape to fill in the main street until more permanent buildings are financially supportable. Design tools include prefabricated architecture, cottages, mobile vendors, and the construction of large indoor and outdoor spaces using shipping pallets for surfaces and shipping containers for structural support. Jason also researched a variety of programming options including pop-up shops, retail micro-mixing, urban agriculture, and open markets, which can enliven buildings and common spaces.



plan and rendering of a vision for a new main street

We are proud to announce that this summer both Greg Witherspoon and Andy Hughes earned their Florida Landscape Architect licenses. Greg is now licensed in New Mexico and Florida. Congratulations to both of them!

Tony Weremeichik received a Presidential Citation from the Homebuilders Association of Metro Orlando for his work on their new headquarters, an effort that was "above and beyond" expectations. Tony also helped organize a Mike Lin "Be Loose" graphic workshop in October that five members of the Canin team attended. The event was a huge success and we are already enjoying the results.

Eliza Harris recently joined the board of Bike Walk Central Florida. You can follow their efforts at bikewalkcentralflorida.org.

Once again, Canin Associates is proud to support and sponsor the Urban Land Institute and the Congress for the New Urbanism for 2014.

We continue to be involved with the new facility for the Homebuilders Association of Metro Orlando that was mentioned in our last newsletter and we are now well into the creation of the construction documents.

The Canin Planning Studio is providing land use planning services as part of the recently selected Ghyabi and Associates team for the Volusia Transportation Organization's 2040 Long Range Transportation Plan. That project will begin in earnest in January and provides our team another opportunity to explore creating an Alternative Land Use scenario for all of Volusia County that is unconstrained by existing planning documents.



A New Community in Colombia

Canin Associates has recently been engaged to create a new community vision and site plan a 150 hectare site in Barrancabermeja, Colombia. The team will be traveling to Colombia in early December to assess the existing conditions and begin the vision development. Barrancabermeja is a city located in the department of Santander. It is home to the largest oil refinery in the country and is the capital of the Province of Mares. It is located on the banks of the Magdalena River. The city has a reputation as an open and vibrant community. Due to its history as an oil town, the city is often visited by moneyed foreigners, engineers and supervisory employees and technicians of oil companies.

canin associates STUDIOS ▾ PORTFOLIO NEWS ▾ ABOUT US ▾

Urban Planning Landscape Architecture Architectural Design

Canin Associates is an interdisciplinary firm of idea-based and forward thinking professionals who are committed to the craft of placemaking. Since our inception in 1980, we have been dedicated to creating vibrant communities that are attractive and enjoyable places to live, work, play, or visit. Our **URBAN PLANNING, LANDSCAPE ARCHITECTURE** and **ARCHITECTURAL DESIGN** studios focus on designing new towns, villages, town centers, mixed-use developments, as well as resorts and custom residences.

planning
designing
great people places

Find us on Facebook
Canin Associates
7 Like 421

Canin Associates
Looking forward to catching up with colleagues at the Planner's Holiday Social tonight with FPZA, Central Florida, CIUJ Orlando, and APA-FL Metro Orlando!
December 12 at 7:14am

Featured Project

Contact Us
Canin Associates
500 Delaney Avenue
Orlando, Florida 32801
407.422.4040 ph | 407.425.7427 fx
<http://www.canin.com>
Send us an Email

canin associates
urban planning • landscape architecture • architectural design
500 delaney avenue orlando, florida 32801 407.422.4040

NEW WEBSITE and NEW OPPORTUNITIES!

After months of planning, Canin Associates is excited to announce the launch of our new website. Our new site has a fresh look and feel, with more information and an easy-to-navigate style. Please visit the site to find out more about our team, our approach, our projects and new opportunities available. Check back often as we plan on frequent updates. Like us on Facebook and follow us on Twitter! www.canin.com